

## Not Covered

1. Normal wear and Tear
2. Any product that fails due to:
  - Abuse
  - Exposure to salt air
  - Improper installation
  - Accident
  - Extraordinary use
  - Improper operation
  - Alterations
  - Improper cleaning
  - Misapplication
  - Damage from pests/insects/pets
  - Improper handling
  - Misuse
3. Natural Wood Products that have:
  - Loss of color intensity
  - Variations in color, grain or texture
  - Warping of wood slats in high humidity areas
4. Costs associated with:
  - Product removal
  - Brand label removal
  - Product reinstallation
  - Incidental or consequential damages
  - Transportation to/from the retailer
  - Product re-measure
  - Shipping

In the event there are multiple blinds/shades in the same room, only the defective blind/shade will be replaced.

**To Report Shipping Damage:** If damage occurred during shipping, call the place of purchase and report within 7 calendar days, or you may be denied credit for your damaged product.

**To Obtain Service:** If you suspect this product has a manufacturing defect in materials or workmanship:

- Locate the sales receipt
- Call place of purchase

Any unauthorized returns will not be accepted.

**Warranty Remedy:** This shall be your sole remedy under this limited warranty. If this product is found to have a manufacturing defect in materials or workmanship, we will, at our discretion, do one of the following:

- Repair the product
- Replace the product
- Refund the cost of the product.

Colors may vary from lot to lot and may not exactly match sample swatches or previous purchases.

Discontinued items or color selections will be replaced with the closest equivalent current product.

**Your rights under state law:** This lifetime limited warranty gives you specific legal rights, and you may have other rights which vary from state to state. Some states do not allow limitations on how long a warranty lasts, so the above limitations may not apply to you. No agent, representative, dealer or unauthorized employee has the authority to increase or alter the obligation of this warranty. This lifetime limited warranty supersedes any previous versions.

# Cordless Cellular Fabric Shade

including Top-Down/Bottom-Up & Day/Night Shades

## INSTALLATION INSTRUCTIONS

### Step 1. Check Package Contents

Missing part? Call 1-800-264-1190

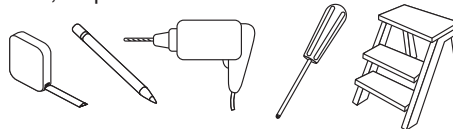
Mounting hardware kit includes the following:

Part	Quantity
a. Mounting Brackets	2 (18" to 36" wide) 3 (36½" to 48" wide) 4 (48½" to 72" wide) Shades ordered over 72" wide, will be (2) shades <b>joined by a Connector Device</b> . The above bracket quantities apply for each shade.
b. 1½" Screws	2 per bracket
c. Hold Down Brackets	2 per shade
d. ¾" Screws	2 per bracket (for hold downs)
e. Handle for Bottom Rail	1 2 shades over 59" wide
f. Handle for Middle Rail	1 TDBU & Day/Night Shades 2 shades over 59" wide
g. Head Rail Connector	1 shades over 72" wide

[Note: one extra screw of each noted size is included for convenience]

### Step 2. Tools Required

Screwdriver, tape measure, pencil, drill, drill bits, step ladder.



Note: use #6 plastic anchors for dry wall or plaster mounting (not included).

Drill Bits: for screws, use a 3/32" drill bit - for wall anchors, use 1/4" drill bit.

### Step 3. Bracket Location and Installation

Your shade may be installed either inside the window frame or outside the window frame.

A mounting bracket should be positioned about 1" to 6" from each end of the head rail. For wider shades that require 3 or more brackets, these should be spaced evenly between the two outermost brackets.

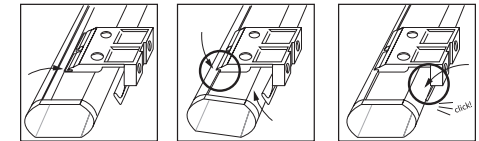
Always position the brackets such that there is no interference with the cords and/or mechanisms inside the head rail. The

procedure outlined below will assure proper bracket placement.

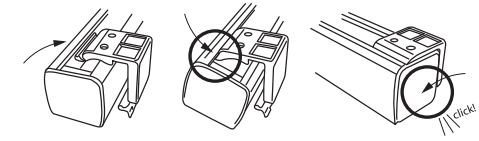
### Attaching the brackets:

The shape of head rails and mounting brackets varies by style of shade.

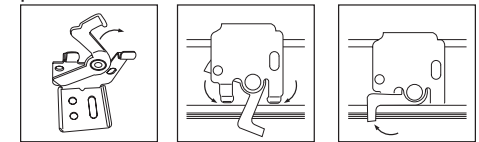
For style 'A' [see illustrations below]: Lift the head rail into position such that the inner front edge of the head rail slides into the slot at the front of each bracket. Push the head rail upward until the flexible tab at the bottom of each bracket snaps onto the back of the head rail. Check carefully to assure that each bracket is properly secured.



For style 'B' [see illustration below]: Lift the Head Rail into position such that the front edge of the bracket is under the inner front edge of the head rail, and then push the head rail upward until the flexible tab at the bottom of each bracket snaps onto the back of the head rail. Check carefully to assure that each bracket is properly secured.



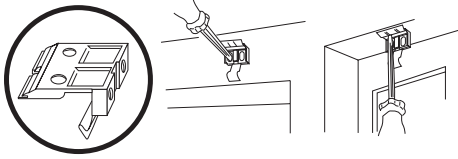
For style 'C' [see illustration below]: To attach the brackets the locking arm should be facing out. Then position the bracket so that it engages the inner front and outer back of the head rail, and then push the locking arm inward to lock it in place.



### For Outside Mounting:

Clip the brackets onto the head rail as described above. Hold the shade level at the height desired and center it over the

window opening. Mark the exact location of each bracket with a pencil. Remove the brackets from the head rail and position the top of each bracket at the marked location and screw each bracket into the wall or window molding using the 1/8" screws, pre-drill the screw holes using a 3/32" drill bit.

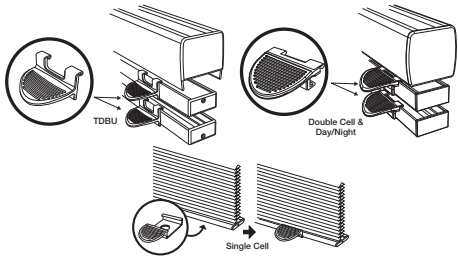


#### For Inside Mounting:

Clip the brackets onto the head rail as described above. Hold the shade in place and make a pencil mark at the rear of each bracket where it contacts the inside of the window frame. Remove the brackets from the head rail and align them with the marks. Attach each bracket using the 1/8" screws, pre-drill the screw holes using a 3/32" drill bit.

#### Step 4. Attach Handle(s)

Attach the Handle to the bottom rail as illustrated. The handle is designed to minimize contact with the shade fabric. Always raise and lower the shade SLOWLY(!) to assure that the pleated fabric stacks neatly.



Wider shades have (2) Handles – to precisely determine the correct position for each handle, divide the total width of the shade by 4, and then attach one handle that distance from each outside edge of the shade – always grasp both handles when lifting and lowering the shade.

For TDBU and Day/Night cordless shades, attach the 2nd handle to the Middle Rail as illustrated.

#### Step 5. How to Operate

### IMPORTANT Operating & Care Instructions for Cell Shades READ CAREFULLY

- Make sure that the Handles have been attached to the rail(s) as described above (see Step 4)
- To maintain optimal performance of the springs that make your cordless shade function, lift and lower your shade through its full range of motion – all the way up and down – every day if possible.
- For shades with a single handle, which must be centered on the rail(s), lift or lower the shade slowly and evenly, keeping the rail(s) level, until the shade is positioned as desired.
- For wider shades with a double set of handles, grasp the handles using both hands and lift the shade slowly and evenly, being sure to keep the rail(s) level.
- If you have trouble lifting your cordless shade:

*If the shade is left in one position for a long period of time, it might be necessary to lift and lower the shade several times to restore normal function.*

*If the shade has been fully raised for a long period of time, it might tend to spring-back (rebound) slightly from the desired length position. This can also be remedied by lifting and lowering the shade several times.*

#### Standard Shade

Always raise and lower the shade SLOWLY(!) to assure that the pleated fabric stacks neatly. To lower the shade: grip the bottom rail handle and slowly pull straight down. To raise the shade, grip the bottom rail handle and push up slowly. Always keep the bottom rail level.

#### Top-Down Bottom-Up & Day/Night Cordless Shades

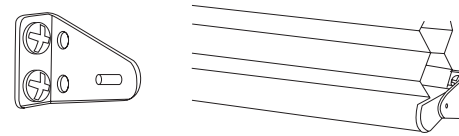
To raise and lower the shade from the bottom, follow the directions above. To lower and raise the shade from the top: grip the middle rail handle and slowly pull straight down/up.

#### Adjusting an Uneven Bottom Rail

Should the rail become uneven, pull the shade all the way down, and then push it all the way up before setting it at the desired height.

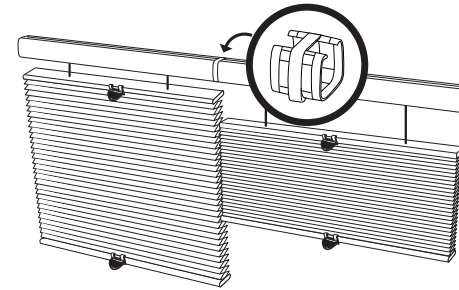
#### Step 6. Installing Hold-Down Brackets

Hold down brackets are provided for optional use. These brackets should be used only if the shade is to be in a permanently lowered position. With the shade fully lowered, make pencil marks at the outside ends of the bottom rail. Brackets should be lined up to the pencil marks and screwed into place using the 3/8" screws. Insert the pins protruding from the brackets into the holes on both ends of the bottom rail (see illustration).



#### Step 7. 2-in-1 Connector for Wide Windows

Connect the Head Rails using the 2-in-1 Connector, as shown.



#### CLEANING

The vinyl head rail and bottom rail can be wiped clean with a damp sponge. To clean the shade fabric, use a feather duster or vacuum lightly using the soft brush attachment.

#### REPLACEMENT PARTS

In the event that replacement parts are ever needed, you may call:

1-800-264-1190

Please be sure to provide the following information, if possible:

- The complete model or catalog number of your product
- A description of the product
- A description of the part needed

#### LIMITED LIFETIME WARRANTY

The enclosed product is warranted to the original residential retail purchaser as long as the product remains in the original window.

#### Covered

**Lifetime:** Entire product against manufacturing defects (i.e. a flaw in the product design, materials, or workmanship that causes the product to no longer function).

**3 Years:** Cords, including internal cords such as those found in cordless blinds or shades.

**5 Years:** All fabric